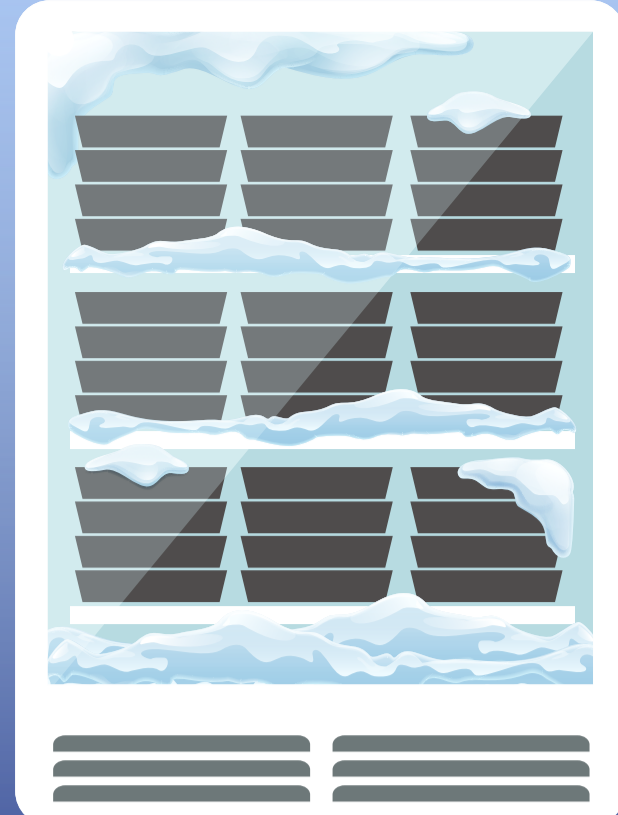


# UNFREEZE YOUR LAB

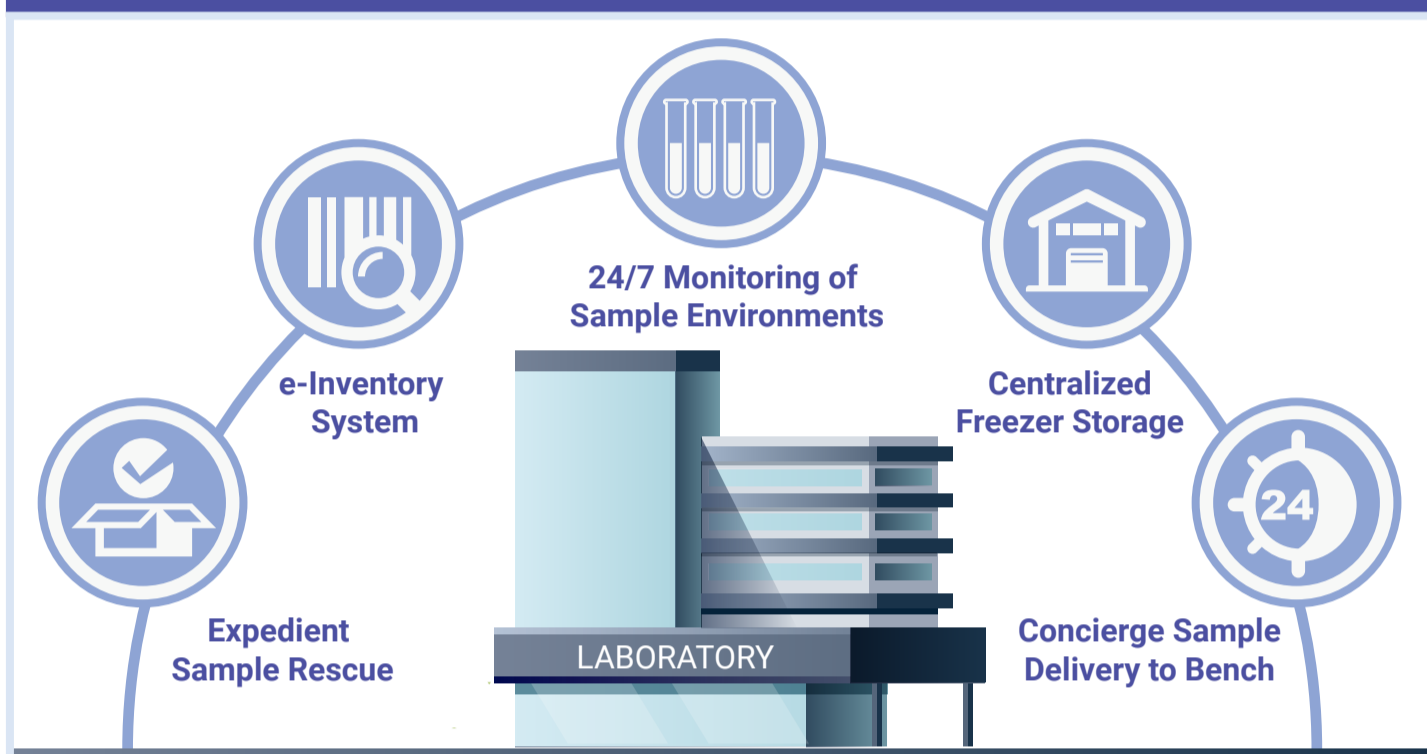
Sample management is essential. PerkinElmer has a proven track record of reliable freezer monitoring, rapid response, and sample retrieval. Further powered by our 24/7 alarm response system and automatic data collection notifications, freezer monitoring with our sample management service will help you return hours to science. PerkinElmer is a partner you can trust to enhance your laboratory efficiencies, while maintaining data integrity and optimizing scientists' time.



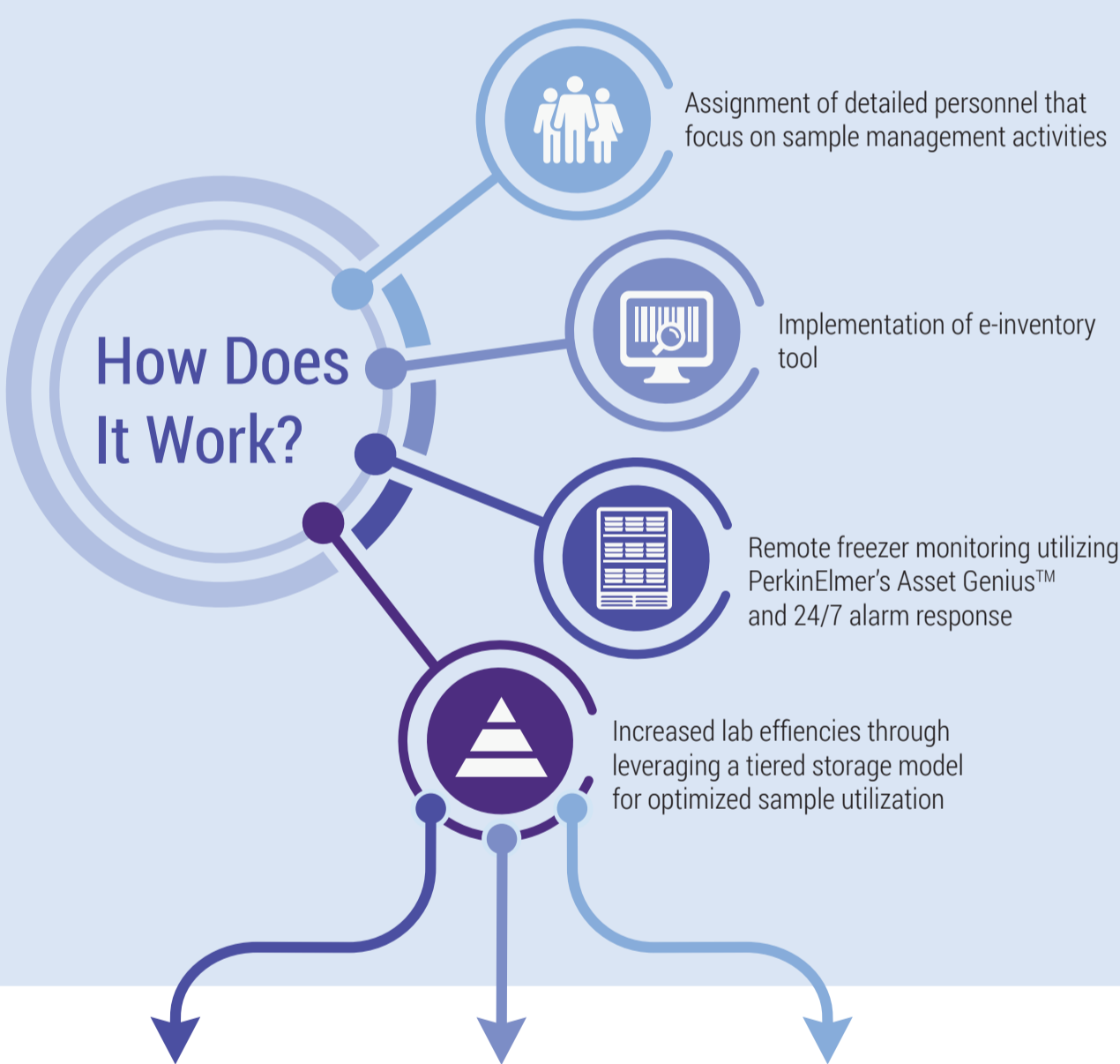
## The importance of proper freezer sample management

1. Enhances rapid sample retrieval
2. Prevents vital sample deterioration
3. Frees up valuable laboratory space
4. Increases efficiencies, giving back time to science
5. Ensures compliance and data integrity
6. Increases visibility into sample storage environment conditions
7. Prevents costly sample replacement
8. Ensures higher quality samples with appropriate lifecycle management

## 5 BASIC COMPONENTS OF SECURE SAMPLE STORAGE



## How Does It Work?



Short-Term Storage	Medium-Term Storage	Long-Term Storage
<ul style="list-style-type: none"> <li>• Ideal for daily-use samples</li> <li>• Local self-service inventories at lab locations or at point of use</li> <li>• High-use, transient sample storage</li> </ul>	<ul style="list-style-type: none"> <li>• Ideal for weekly or monthly-use samples</li> <li>• Centralized storage hubs</li> <li>• Stock inventory that can also feed point of use</li> <li>• Inventory held for up to 3 years</li> </ul>	<ul style="list-style-type: none"> <li>• Off-site storage for samples retained for regulatory or business requirements</li> <li>• Maintain inventory histories and comply with regulatory requirements</li> </ul>

## Customer Case Study:

PerkinElmer's freezer management services were implemented at a large global pharmaceutical company site based in the United Kingdom. A team of 4 full time employees have been in place for 1.5 years. The site has been built out with a 600K sample capacity, and is currently at 70K samples kept in 4, -20, -80 and -150°C freezers.

- Sample management employees are tasked with:
- Collecting samples from lab on same day (1 hour if urgent)
  - Delivering samples back to lab same day (1 hour if urgent)
  - 24/7 alarm response and sample relocation

The ability to centralize samples and deliver a personal delivery service through our concierge model has been well received by the end users. The partnership has seen increased laboratory uptime and reduced sample management administration. The PerkinElmer staff sample management team has not had to respond to a critical alarm.



Discover how to unfreeze your laboratory scientists from sample management