

SIMPLIFY THE ASSET PROCUREMENT PROCESS

Comprehensive onboarding services returns time to scientists, restoring focus on research



Problem:

Procuring new lab equipment is a time-consuming, energy-demanding process that requires coordinating logistics across multiple departments and overseeing installation and calibration. Overlooking minor details can lead to delayed installation, inconsistent instrument tagging and reporting, inventory discrepancies, financial forecasting inaccuracies, and costly downtime at the bench.

Solution:

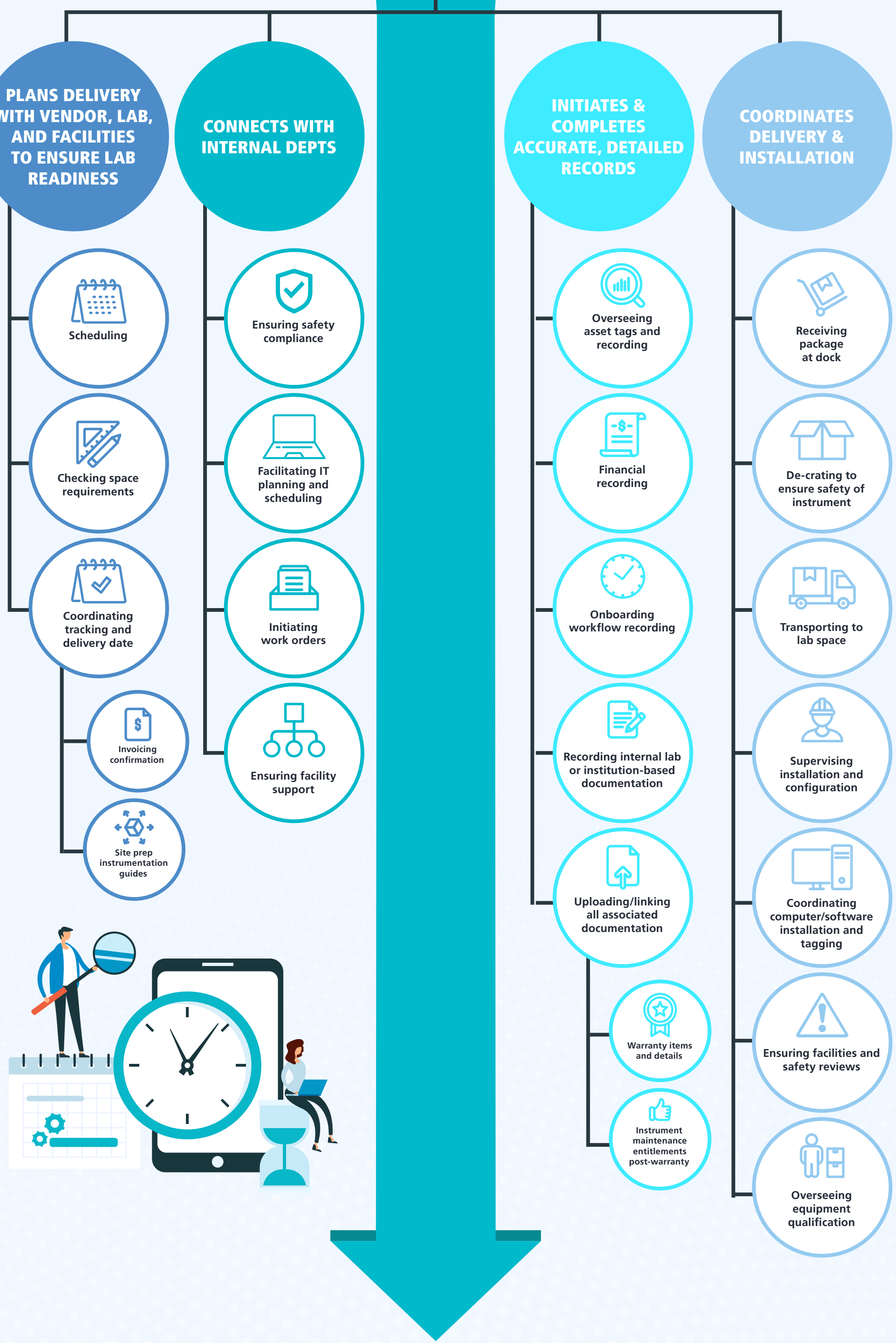
PerkinElmer, partnered with your lab, will coordinate everything from instrument delivery to installation. The OneSource asset onboarding coordinator provides complete technical oversight and records management. This program helps free scientists to focus on research while assuring a comprehensive approach to instrument lifecycle administration and data capture.

PLACE AN EQUIPMENT ORDER



ONBOARDING COORDINATOR

The Onboarding Coordinator oversees delivery, installation, and calibration



GET STRAIGHT TO THE RESEARCH THAT MATTERS

PARTNER WITH PERKINELMER TO:

- Optimize uptime and asset utilization
- Facilitate major lab expansion or relocation
- Implement new computing infrastructure standards
- Coordinate major lab updates with procurement and disposition